



# 22q11 SYNDROME AND ALTERNATIVE AUGMENTATIVE COMMUNICATION SYSTEMS

## A CASE STUDY WITH PECS



PYRAMID  
EDUCATIONAL  
CONSULTANTS

Sònia Vilaltella Verdes

*Speech Therapist / Psychologist*

# PECS:

## Picture Exchange Communication System

- Alternative/augmentative communication system based on pictures
- Development began on 1985
- Based on principles of Applied Behavior Analysis and on B. F. Skinner's 1957 book, *Verbal Behavior*
- Research based
- 6 phases to teach the student to communicate (from requests to comments)
- No academic or cognitive prerequisites
- It can be done on low technology (paper) or high technology (digital)



(Frost & Bondy, 1994)

# 9 Critical Communication Skills

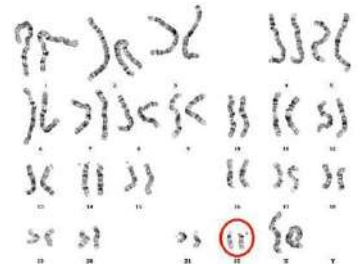
## Expressive

1. Request reinforcers
2. Request assistance
3. Request a break
4. Accept
5. Reject

## Receptive

1. Respond to “**wait**” or “**no**”
2. Respond to directions
3. Follow a schedule
4. Transition

# 22q11 Syndrome, clinical aspects

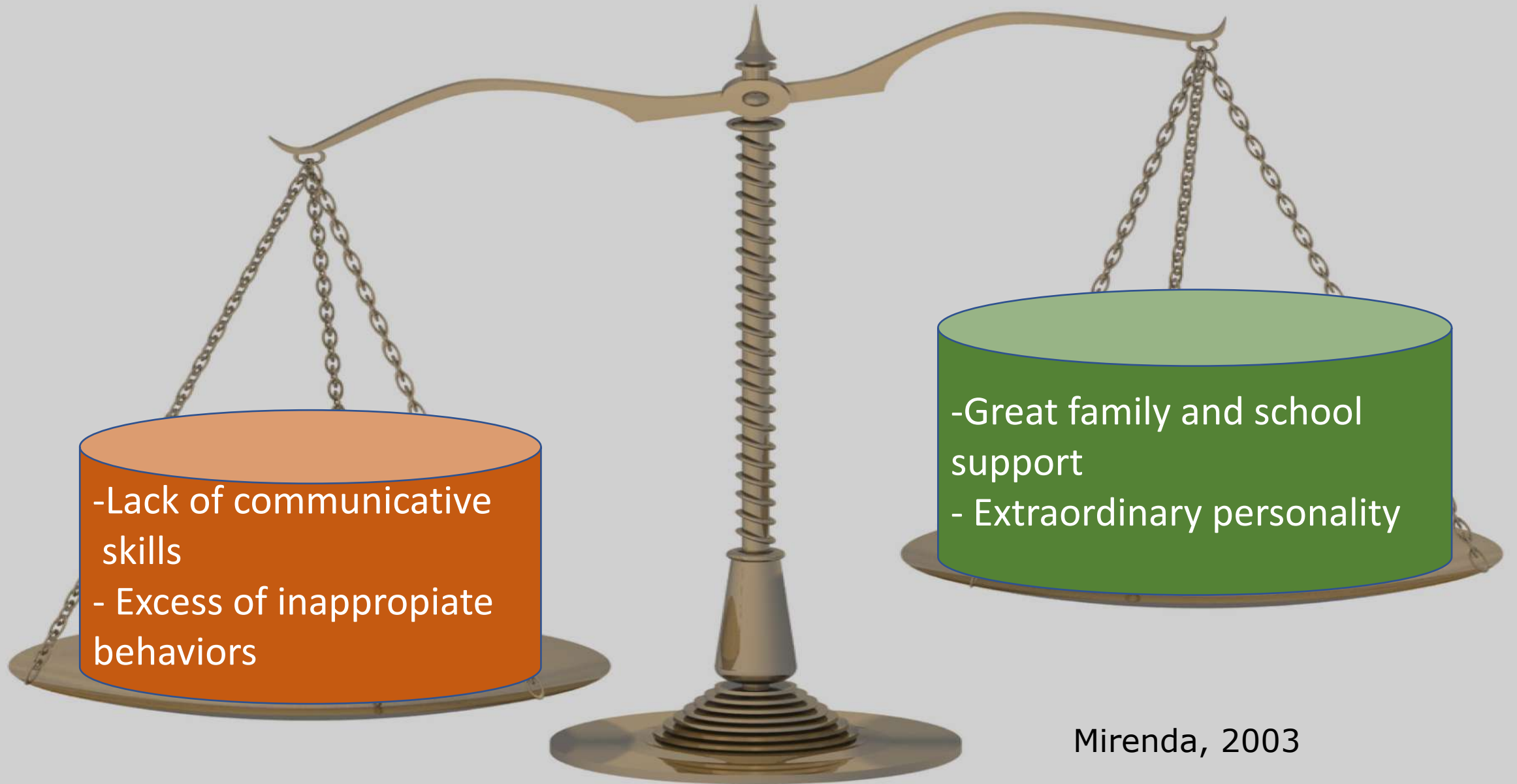


- Differences in physical appearance
- Difficulties in nutrition and growth
- Congenital heart defects
- Immunodeficiency
- Hypocalcemia
- Genitourinary involvement
- Skeletal abnormalities

- Palate and speech impairment
- Deafness
- Psychomotor delays
- Learning difficulties (language and behavior)
- Comorbid psychiatric pathology

First visit:  
15/4/16  
(8y.2m.)

- 22q11 Syndrome
- Non verbal
- Inappropriate behaviors: punches herself on the head and bites herself
- Use of pictures but without a teaching protocol and refuses them
- Doesn't wait
- Doesn't ask for help
- Doesn't accept when told "no"
- Doesn't know how to say yes neither how to refuse
- Has a picture schedule but not used on transition moments
- Repetitive behaviors, possible OCD (related to food and order)



Mirenda, 2003

Previous  
communication  
skills

---







## Expressive skills today:

- Increase of demands and comments
- Transition to a Voice Output Communication Device
- Reduction of behaviors related to expressive communication such as needs or pain
- Introduction of academic-literacy (reading) and self-management skills

VULL MIRAR LA TABLET AMB “OS CASA BLAVA”

## Receptive skills today

- Skills used on the community, accepts “no” and “wait”
- Self-management skills, following schedules and visual instructions
- Reduction of behaviors related to frustration and possible OCD



**THANK YOU**

[svilatella@pecs.com](mailto:svilatella@pecs.com)

[www.pecs-spain.com](http://www.pecs-spain.com)

[www.centrequian.com](http://www.centrequian.com)